



Water Heaters

electric gas industrial





Since 1983 Nuova COTERM has developed a wide range of water heaters.

Thank to careful attention to market demands and continuous research towards new solutions, Nuova COTERM is able to offer clients the most competitive water heaters range.

Products reliability is guaranteed by strict quality controls carried out in the Nuova COTERM laboratory which is equipped with suitable instruments to control the combustion process



Serie S

Gas - Oil Fired, Cryolite Glass Finished Industrial Duty Water Heaters Gas - Oil Fired Burner



Industrial duty gas fired water heater designed to provide a highly cost effective water boiler for high users (SPORT CENTRES, HOSPITALS, LARGE PREMISES, CAMP SITES, HOTELS, REST HOMES, GYMS, SAUNAS ETC.).

BOILER: made of top quality and very thick steel casing, featuring a carefully applied cryolite glass finish, which ensures a higher resistance to scaling.

CASING: pre-painted sheet metal.

BURNER: with blown air; not included in the boiler. The burner must be installed by the customer.

INSULATION: made from fibreglass rolls, which ensure an even insulation.

MODEL	SERIE S - gas				
	UM	S 60	S 75	S 90	S 115
BURNER MODEL RIELLO	mod.	BS 2	BS 2	BS 3	BS 3
BURNER TYPE RIELLO	tipo	912 T1	912 T1	913 T1	913 T1
CAPACITY	Litri	320	320	317	280
NOMINAL THERMAL CAPACITY	kW	60	75	90	115
WORKING THERMAL POWER	kW	51	64	76	96
FUME EVACUATION DUCT Ø	mm	220	220	220	220
MAX WATER PRESSURE	bar	8	8	8	8
HEATING TIME AT 60° C	min.	20	15	14	9
CONSTANT DRAWING AT 60° C (ΔT 45°C)	l/h	975	1224	1455	1847
CONSTANT DRAWING AT 45° C (ΔT 30°C)	l/h	1462	1835	2180	2755
CONSTANT DRAWING AT 40° C (ΔT 25°C)	l/h	1754	2203	2615	3305
METHANE G20 - 20 mbar PRESSURE valve inlet					
GAS INLET PRESSURE	mbar	20	20	20	20
PRESSURE TO BURNER	mbar	4	6	3	4,3
GAS CONSUMPTION (15° C e 1013 mbar)	m³/h	6,35	7,94	9,53	12,17
GAS PROPANO G31 - 30/37/50 mbar PRESSURE valve inlet					
GAS INLET PRESSURE	mbar	30/37/50	30/37/50	30/37/50	30/37/50
PRESSURE TO BURNER	mbar	4,4	6,5	2,6	3,7
GAS CONSUMPTION (15° C e 1013 mbar)	Kg/h	4,9	6	7,4	9,1
GAS BUTANO G30 - 30/50 mbar PRESSURE valve inlet					
GAS INLET PRESSURE	mbar	30/50	30/50	30/50	30/50
PRESSURE TO BURNER	mbar	6,3	8,7	3,35	4,9
GAS CONSUMPTION (15° C e 1013 mbar)	Kg/h	4,81	5,97	7,31	9,01

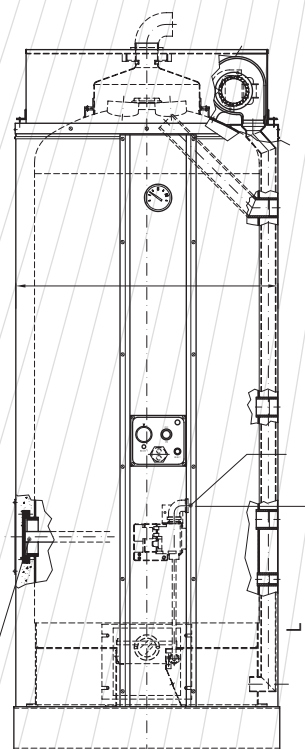
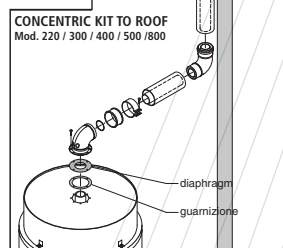
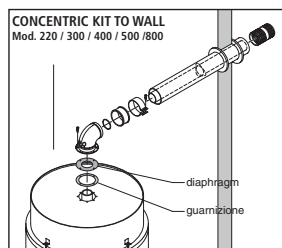
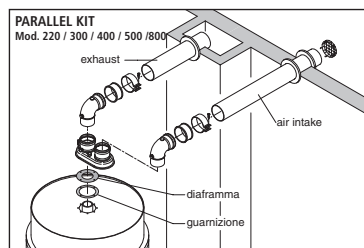
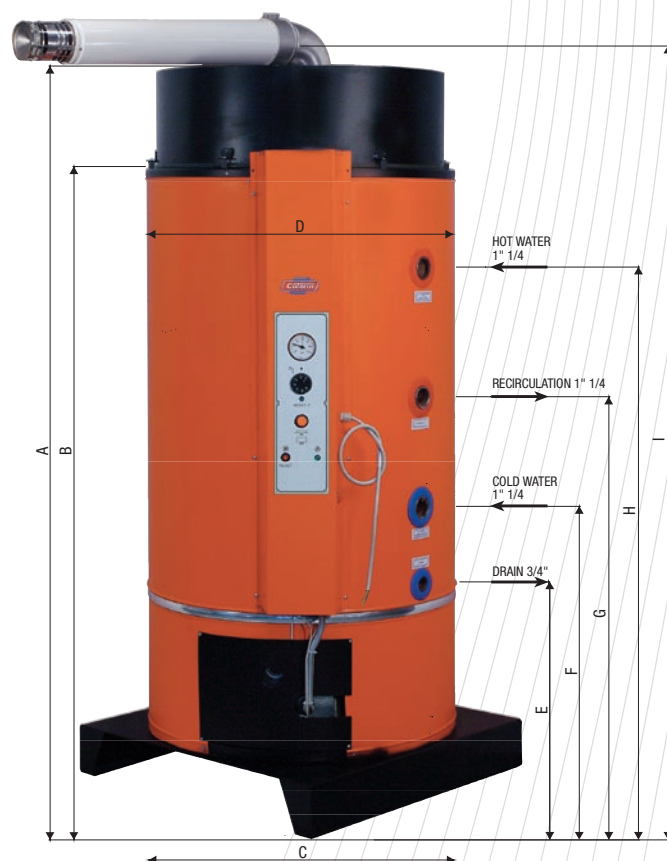
MODEL	SERIE S - gas oil				
	UM	S 60	S 75	S 90	S 115
BURNER MODEL RIELLO	mod.	RG 2	RG 2	RG 3	RG 3
BURNER TYPE RIELLO	tipo	377 T1	377 T1	393 T1	393 T1
GAS OIL NOZZLE	tipo	1,25x80B	1,5x80B	1,75x80B	2,25x80B
CAPACITY	Litri	320	320	317	280
NOMINAL THERMAL CAPACITY	kW	63	76	88	114
WORKING THERMAL POWER	kW	54	64	74	96
FUME EVACUATION DUCT Ø	mm	220	220	220	220
MAX WATER PRESSURE	bar	8	8	8	8
HEATING TIME AT 60° C	min.	20	15	14	9
OIL CAPACITY	Kg/h	5,4	6,4	7,5	9,6
PUMP PRESSURE	bar	12	12	12	12
CONSTANT DRAWING AT 60° C (ΔT 45°C)	l/h	975	1224	1455	1847
CONSTANT DRAWING AT 45° C (ΔT 30°C)	l/h	1462	1835	2180	2755
CONSTANT DRAWING AT 40° C (ΔT 25°C)	l/h	1754	2203	2615	3305
DIMENSIONAL FEATURES					
COLD WATER INLET		1" ½	1" ½	1" ½	1" ½
HOT WATER OUTLET		1" ½	1" ½	1" ½	1" ½
DRAIN		¾	¾	¾	¾
ANODE CONNECTION		¾	¾	¾	¾
NUMBER OF ANODES		2	2	2	2
PRESSURE VALVE CONNECTOR		1"	1"	1"	1"
MAX. OPERATING PRESSURE	bar	8	8	8	8
EMPTY APPLIANCE WEIGHT	Kg	261	261	289	289



Gas Fan Assisted Sealed Chamber

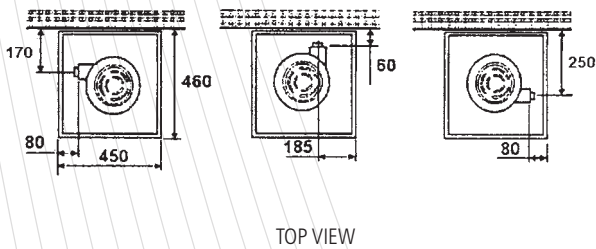
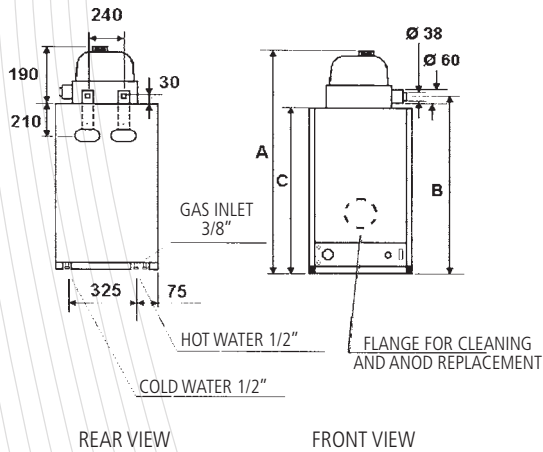
MODEL		220	300	400	500	800	
A	Total height	mm	1600	1950	1766	2036	2146
B	Water header body height	mm	1265	1615	1430	1700	1810
C	Base width	mm	710	710	810	810	1010
D	Water heaters Ø	mm	700	700	800	800	1000
E	Drain 3/4"	mm	480	480	460	460	545
F	Cold water inlet 1" 1/4	mm	645	645	625	625	645
G	Recirculation 1" 1/4	mm	890	950	1026	1026	990
H	Hot water outlet 1" 1/4	mm	1170	1460	1325	1595	1604
I	Fume exhaust axis 60/100	mm	1700	2050	1866	2136	2246
L	gas inlet	mm	630	630	630	630	630

MODEL	Unità	220	300	400	500	800
Capacity of the tank	lt	212	310	410	510	810
Nominal heat input	KW	30	34	34	34	34
Nominal heat output	KW	26,8	30,6	30,6	30,6	30,6
Combustion efficiency	%	92%	93%	93%	93%	94%
Natural gas rate (G20)	m³/h	3,17	3,60	3,60	3,60	3,60
LPG gas rate (G30/31)	Kg/h	2,13	2,50	2,50	2,50	2,50
Recovery time (ΔT 25°C)	min.	15	17	23	29	46
Recovery time (ΔT 45°C)	min.	28	31	41	52	82
Single withdraw (ΔT 25°C)	lt	484	660	880	1100	1760
Single withdraw (ΔT 45°C)	lt	268	366	488	611	977
Continuous water output (ΔT 25°C)	lt/h	921	1052	1052	1052	1052
Continuous water output (ΔT 45°C)	lt/h	512	585	585	585	585
Continuous water output (ΔT 30°C)	lt/h	768	877	877	877	877
Electrical data	V-Hz	220-240 V ~ 50 Hz (IP 20)				
Max water pressure	bar	6	6	6	6	6
Empty appliance weight	kg	142	166	177	207	300
Full appliance weight	kg	354	476	587	717	1110



GTF 80 - 120

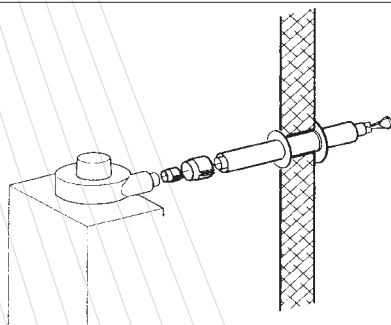
Gas Fan Assisted Sealed Chamber



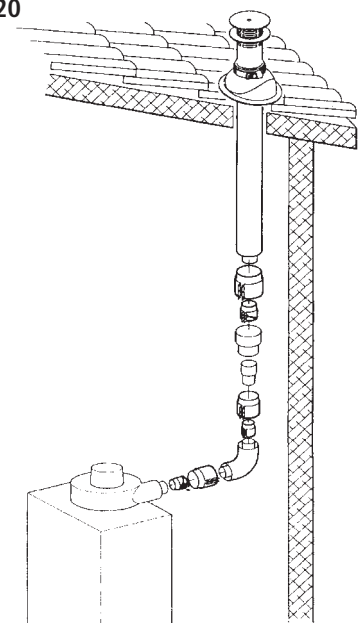
MODEL	80	120
Total height (mm.)	1040	1400
Exhaust height	895	1255
Inner diameter exhaust pipe (mm.)	38	38
Inner diameter air intake pipe (mm.)	60	60
Diameter flange for inspection and anod replacement (mm.)	85	85

MODEL	Unit	80	120
Capacity	lt	75	115
Nominal Heat input	Kcal/h	4300	4300
	K/W	5,0	5,0
Nominal heat output	Kcal/h	4040	4040
	K/W	4,7	4,7
Combustion efficiency	%	94%	94%
Single spillage at 40°C (termost. 70°C - inlet temp. 15°C)	lt	147	231
First 10 min. spillage at 40°C (termost. 70°C - inlet temp. 15°C)	lt	168	252
Recovery time at 40°C (inlet temp. 15°C)	min.	25	38
Continuous water output at 40°C (inlet temp. 15°C)	lt/h.	164	164
Supply	volt	220-240	220-240
Frequency	hz	50	50
Electrical power	w	26	26
Max water pressure	bar	6	6
Empty weight	Kg	49	49

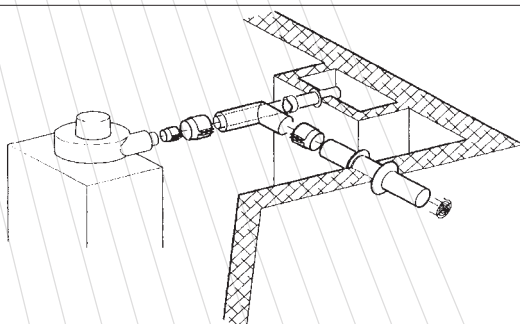
HORIZONTAL KIT Mod. 80 / 120



VERTICAL KIT Mod. 80 / 120



PARALLEL KIT Mod. 80 / 120

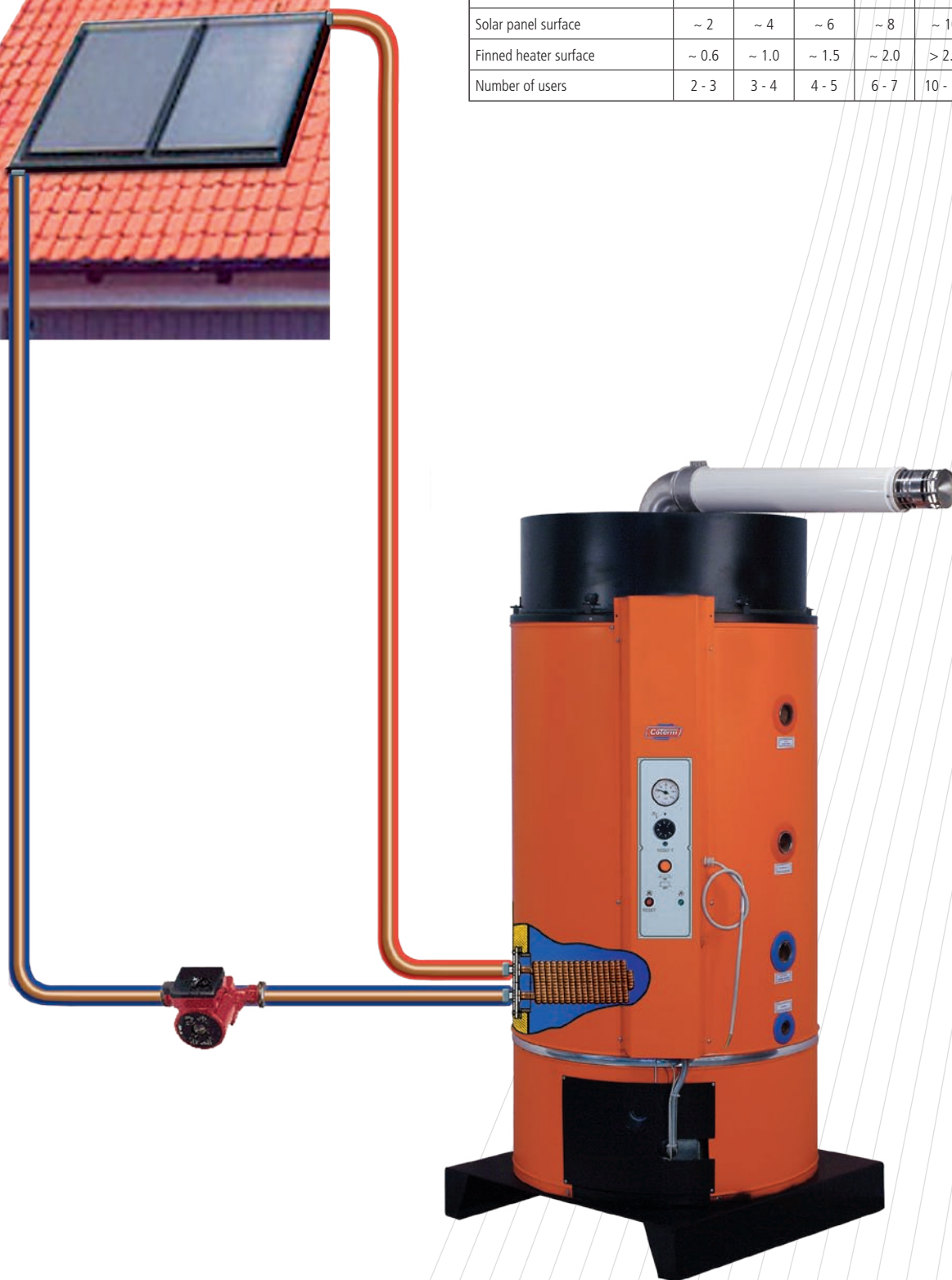


GTS Sol

Gas Fan Assisted

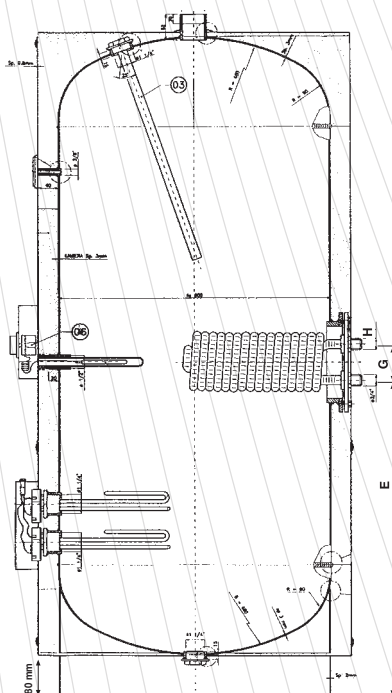


MODEL	220	300	400	500	800
Liters	220	300	400	500	800
Solar panel surface	~ 2	~ 4	~ 6	~ 8	~ 10
Finned heater surface	~ 0.6	~ 1.0	~ 1.5	~ 2.0	> 2.0
Number of users	2 - 3	3 - 4	4 - 5	6 - 7	10 - 11



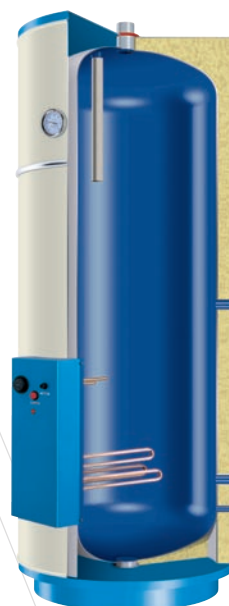
Serie BE

Cryolite Glass Finished Industrial Duty Water Heaters



MODEL	BE	BE	BE	BE	BE	BE	BE	BE	BE	BE
	BTE	BTE	BTE	BTE	BTE	BTE	BTE	BTE	BTE	BTE
LITERS	150	200	300	400	500	600	800	1000	1500	2000
A	540	540	700	750	750	800	1000	1000	1500	2000
B	1150	1350	1450	1500	1780	1900	1820	2100	2000	2250
C	480	480	600	650	650	700	900	900	1200	1200
D	280	280	360	360	360	360	370	370	390	400
E	260	380	470	470	600	600	600	600	600	600
F	450	450	500	500	600	600	600	600	600	600
G	70	70	70	70	70	70	70	70	70	70
H	¾"	¾"	¾"	¾"	¾"	¾"	¾"	¾"	¾"	¾"
I	¾"	¾"	1 ¼"	1 ¼"	1 ¼"	1 ¼"	1 ¼"	1 ¼"	1 ¼"	1 ¼"
WEIGHT (Kg)	50	60	85	87	100	120	200	230	280	350

MODEL	SERIE BE/BTE										
	UM	120	150	200	300	400	500	600	800	1000	2000
PRESSURE	bar	6	6	6	6	6	6	6	6	6	6
POWER	kW	1,5	2	3	4,5	5	6	8	10	15	20
VOLTAGE	V	230	230	230	230	230	380	380	380	380	380
WATER PRODUCTION 15° to 45° C	l/h	41	55	82	125	139	167	223	80	280	280
HEATING TIME 15° to 45° C	min	218	218	217	191	215	215	215	215	215	215
COIL SURFACE	m²	0,59	0,59	1,05	1,05	1,05	1,05	1,5	1,5	1,5	1,5
WATER PRODUCTION FROM 15° to 45° C	° C	243	243	432	432	431	605	757	757	757	757
RECOVERY TIME	min	37	50	42	56	70	60	63	80	80	80
Ø CONNECTION		¾"	¾"	¾"	¾"	¾"	¾"	¾"	¾"	¾"	¾"
WATER FLOW RESISTANCE 80/70° C	mca	0,1	0,1	0,4	0,5	0,5	1,0	1,8	1,	2,0	2,0
CAPACITY	l/h	730	730	1310	1310	1310	1830	2300	2300	3000	3800



This electrical industrial duty water heater is ideal for high water production for applications where gas cannot be used.

This electric version is the best solution for SPORT CENTRES, HOSPITALS, LARGE PREMISES, CAMP SITES, HOTELS, REST HOMES, GYMS, SAUNAS, and for any applications requiring high water production.

BOILER: made of top quality steel sheet metal.

CASING: made of pre-painted galvanised sheet metal.

THERMOSTAT RESISTANCE UNIT: consisting of a copper resistance available in a range of power outputs according to the water capacities and requirement (see technical datasheet) and of a single pole thermostat to control the temperature of the water.

THERMAL INSULATION: made of top quality fi-breglass to ensure optimal output.



Serie BGP

Cryolite Glass Finished Industrial Duty Gas Water Heaters With Natural Draft - Pilot Light

MODEL	BGP	BGP	BGP	BGP
LITERS	300	400	500	900
A	1590	1890	1980	1950
B	1390	1690	1780	1750
C	750	750	800	990
D	650	650	700	900
E	440	440	440	480
F	710	930	930	1120
G	1330	1610	1710	1850
I	200	200	200	200
M	520	520	520	520
N	120	120	120	105
P	1"¼	1"¼	1"¼	1"¼
Q	COLD WATER INLET 1 - SHUTOFF VALVE 3 - SAFETY VALVE 2 - PRESSURE REDUCER 4 - EXPANSION TANK			
R	HOT WATER OUTLET			
S	DRAINAGE CONNECTION - ½" 5 - DRAIN VALVE			
T	RECIRCULATION CONNECTION			
WEIGHT (Kg)	165	180	215	320

MODEL	SERIE BGP				
	UM	300	400	500	900
CAPACITY OF THE TANK	Litri	292	380	485	850
NOMINAL HEAT INPUT	kW	43	46,5	49	82,5
WORKING THERMAL POWER	kW	36,55	39,52	41,65	70,12
FUME EVACUATION DUCT Ø	mm	200	200	200	200
MAX WATER PRESSURE	bar	6	6	6	6
FUME TEMPERATURE	°C	135	150	150	193
RECOVERY TIME 45° C	min.	17	20	25	26
CONSTANT DRAWING AT 45° C	l/h	1047	1133	1194	2010
CONSTANT DRAWING AT 65° C	l/h	628	680	716	1206
METHANE G20 - 20 mbar PRESSURE valve inlet					
CONSUMPTION	m3/h	4,55	4,92	5,18	8,73
BURNER NOZZLE Ø	mm	4 x 2,8	4 x 2,8	4 x 2,8	6 x 3,0
PILOT FLAME NOZZLE Ø	mm	2 x 0,27	2 x 0,27	2 x 0,27	2 x 0,27
PRESSURE TO BURNER	mbar	12,0	13,0	15,5	13,0
MASS FUME CAPACITY	g/s	18,0	19,5	20,6	34,7
GPL G30/G31 - 30/37 mbar PRESSURE valve inlet					
CONSUMPTION	Kg/h	3,21	3,47	3,66	6,17
BURNER NOZZLE Ø	mm	4 x 1,65	4 x 1,70	4 x 1,75	6 x 1,85
PILOT FLAME NOZZLE Ø	mm	1 x 0,22	1 x 0,22	1 x 0,22	1 x 0,22



Industrial duty gas fired water heater designed to provide a highly cost effective water boiler for high users (SPORT CENTRES, HOSPITALS, LARGE PREMISES, CAMP SITES, HOTELS, REST HOMES, GYMS, SAUNAS ETC.)

BOILER: made of top quality and very thick steel casing, featuring a carefully applied cryolite glass finish, which ensures a higher resistance to scaling.

CASING: pre-painted sheet metal.

BURNER: made of stainless steel. The burner is supplied with a nozzle kit for gas conversion.

PILOT BURNER: suitable for any type of gas.

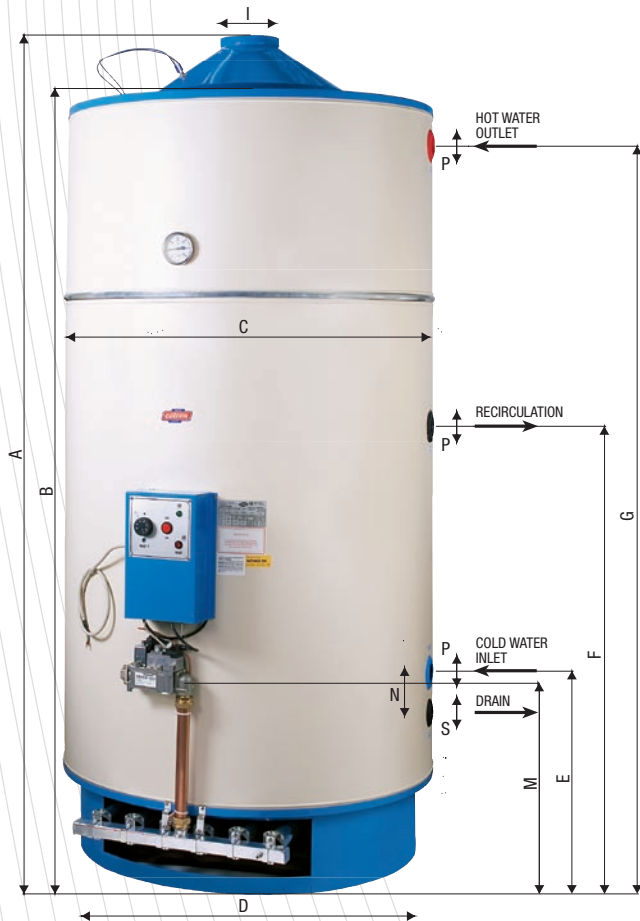
THERMOCOUPLE: to ensure a safe gas flow to the burner.

ELECTRIC VALVE: supplied with a pressure regulator and safety valve which stops the gas from being released should the pilot light go off.

INSULATION: made of fibreglass rolls, which ensure an even insulation.

Serie BGPE

Cryolite Glass Finished Industrial Duty Gas Water Heaters With Natural Draft - Electronic Ignition



Industrial duty gas fired water heater designed to provide a highly cost effective water boiler for high users (SPORT CENTRES, HOSPITALS, LARGE PREMISES, CAMP SITES, HOTELS, REST HOMES, GYMS, SAUNAS ETC.).

BOILER: made of top quality and very thick steel casing, featuring a carefully applied cryolite glass finish, which ensures a higher resistance to scaling.

CASING: pre-painted sheet metal.

BURNER: made of stainless steel. The burner is supplied with a nozzle kit for gas conversion.

IGNITION AND DETECTION ELECTRODES: to ensure a safe gas flow to the burner.

ELECTRIC VALVE: fitted with a pressure regulator and a safety valve which stops the gas from being released should the pilot light go off.

INSULATION: made of fibreglass rolls, which ensure an even insulation.

MODEL	BGP-E	BGP-E	BGP-E	BGP-E
LITERS	300	400	500	900
A	1590	1890	1980	1950
B	1390	1690	1780	1750
C	750	750	800	990
D	650	650	700	900
E	440	440	440	480
F	710	930	930	1120
G	1330	1610	1710	1850
I	200	200	200	200
M	520	520	520	520
N	120	120	120	105
P	1" 1/4	1" 1/4	1" 1/4	1" 1/4
Q	COLD WATER INLET 1 - SHUTOFF VALVE 3 - SAFETY VALVE 2 - PRESSURE REDUCER 4 - EXPANSION TANK			
R	HOT WATER OUTLET			
S	DRAINAGE CONNECTION - 1/2" 5 - DRAIN VALVE			
T	RECIRCULATION CONNECTION			
WEIGHT (Kg)	165	180	215	320

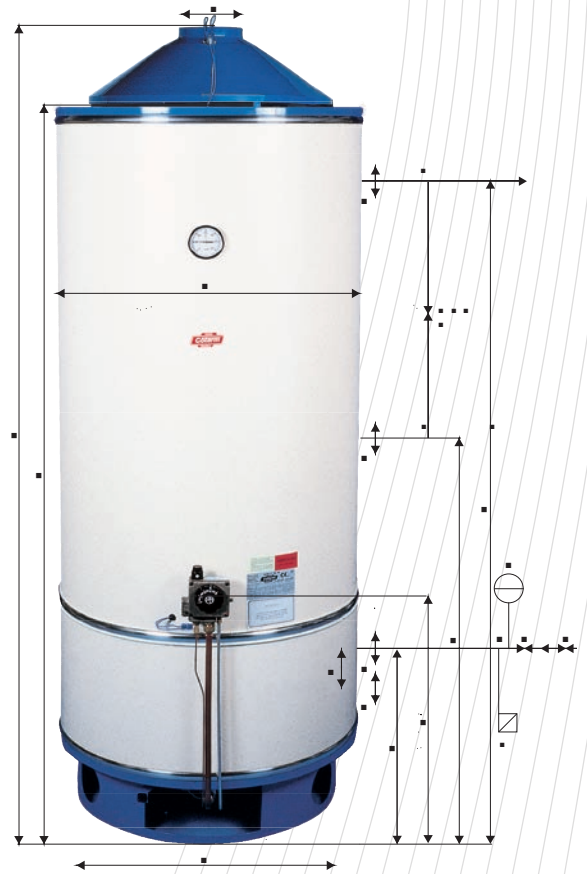
MODEL	SERIE BGP-E				
	UM	300	400	500	900
CAPACITY OF THE TANK	Litri	292	380	485	850
NOMINAL HEAT INPUT	kW	43	46,5	49	82,5
WORKING THERMAL POWER	kW	36,55	39,52	41,65	70,12
FUME EVACUATION DUCT Ø	mm	200	200	200	200
MAX WATER PRESSURE	bar	6	6	6	6
FUME TEMPERATURE	°C	135	150	150	193
RECOVERY TIME 45° C	min.	17	20	25	26
CONSTANT DRAWING AT 45° C	l/h	1047	1133	1194	2010
CONSTANT DRAWING AT 65° C	l/h	628	680	716	1206
METHANE G20 - 20 mbar PRESSURE valve inlet					
CONSUMPTION	m3/h	4,55	4,92	5,18	8,73
BURNER NOZZLE Ø	mm	4 x 2,8	4 x 2,8	4 x 2,8	6 x 3,0
PRESSURE TO BURNER	mbar	12,0	13,0	15,5	13,0
MASS FUME CAPACITY	g/s	18,0	19,5	20,6	34,7
GPL G30/G31 - 30/37 mbar PRESSURE valve inlet					
CONSUMPTION	Kg/h	3,21	3,47	3,66	6,17
BURNER NOZZLE Ø	mm	4 x 1,65	4 x 1,70	4 x 1,75	6 x 1,85



Serie BG

Cryolite Glass Finished Industrial Duty Gas Water Heaters With Natural Draft - Pilot Light

MODEL	BG	BG	BG	BG	BG	BG	BG	BG	BG
LITERS	120	150	200	300	400	500	600	800	1000
A	1200	1300	1500	1700	1760	1990	2090	2000	2220
B	1100	1200	1400	1500	1560	1790	1890	1800	2020
C	450	540	540	700	750	750	800	990	990
D	410	480	480	600	650	650	700	900	900
E	260	360	360	375	380	380	390	460	460
F	360	600	725	845	850	920	990	950	1070
G	1130	1230	1430	1235	1270	1520	1610	1440	1680
I	80	100	100	140	140	140	140	160	160
M	/	400	400	620	630	630	660	710	720
N	/	/	/	100	100	100	100	120	120
P	¾"	¾"	¾"	1"¼"	1"¼"	1"¼"	1"¼"	1"¼"	1"¼"
Q	COLD WATER INLET 1 - SHUTOFF VALVE 2 - PRESSURE REDUCER				3 - SAFETY VALVE 4 - EXPANSION TANK				
R	HOT WATER OUTLET								
S	DRAINAGE CONNECTION - ½" 5 - DRAIN VALVE								
T	RECIRCULATION CONNECTION								
WEIGHT (Kg)	45	55	64	107	117	135	158	252	285



MODEL	SERIE BG									
	UM	120	150	200	300	400	500	600	800	1000
CAPACITY OF THE TANK	Litri	115	150	200	240	390	450	565	780	950
NOMINAL HEAT INPUT	kW	5,8	9,9	9,9	17,4	23,7	23,7	23,7	37,0	37,0
WORKING THERMAL POWER	kW	4,8	8,2	8,2	14,6	19,9	19,9	19,9	32,5	32,5
FUME EVACUATION DUCT Ø	mm	80	100	100	140	140	140	140	160	160
MAX WATER PRESSURE	bar	6	6	6	6	6	6	6	6	6
FUME TEMPERATURE	°C	176	176	176	125	120	115	115	123	123
NATURAL GAS - 20 mbar PRESSURE										
CONSUMPTION	m3/h	0,6	1	1	1,8	2,5	2,50	2,5	3,90	3,90
BURNER NOZZLE Ø	mm	2,00	2,40	2,40	3,45	4,10	4,10	4,10	3,15x3	3,15x3
PILOT FLAME NOZZLE Ø	mm	2x0,27	2x0,27	2x0,27	2x0,27	2x0,27	2x0,27	2x0,27	2x0,27	2x0,27
PRESSURE TO BURNER	mbar	10,9	15,5	15,5	13,3	11,6	11,6	11,6	11,7	11,7
MASS FUME CAPACITY	g/s	5,8	6,7	6,7	19,6	18,8	18,8	18,8	32,0	32,0
GPL G30/G31 - 30/37 mbar PRESSURE										
CONSUMPTION	Kg/h	0,4	0,75	0,75	1,30	1,80	1,80	1,80	2,90	2,90
BURNER NOZZLE Ø	mm	1,15	1,60	1,60	1,95	2,40	2,40	2,40	1,80x3	1,80x3
PILOT FLAME NOZZLE Ø	mm	0,4	0,22	0,22	0,22	0,22	0,22	0,22	0,22	0,22
MASS FUME CAPACITY	g/s	6,8	12,3	12,0	21,5	19,0	19,0	19,0	30,6	30,6

Industrial duty gas fired water heater designed to provide a highly cost effective water boiler for high users (SPORT CENTRES, HOSPITALS, LARGE PREMISES, CAMP SITES, HOTELS, REST HOMES, GYMS, SAUNAS ETC.).

BOILER: made of top quality and very thick steel casing, featuring a carefully applied, double cryolite glass or galvanised finish, which ensure a higher resistance to scaling.

CASING: pre-painted sheet metal.

BURNER: made of stainless steel with three nozzles according to the type of gas used.

PILOT BURNER: suitable for any type of gas.

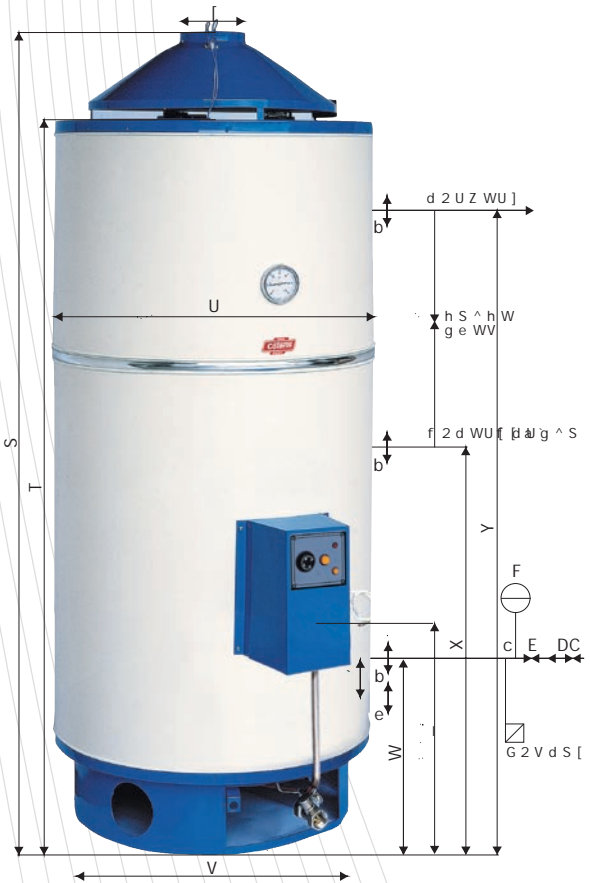
THERMOCOUPLE: to ensure safe gas flow to the burner.

THERMOSTATIC VALVE: fitted with a pressure regulator and a safety valve which stops the gas from being released should the pilot light go off.

INSULATION: made of fibreglass rolls, which ensure an even insulation.

Serie BGE

Gas Fired Industrial Duty Water Storage Heaters With Natural Draft - Electronic Ignition



Industrial duty gas fired water heater designed to provide a highly cost effective water boiler for high users (SPORT CENTRES, HOSPITALS, LARGE PREMISES, CAMP SITES, HOTELS, REST HOMES, GYMS, SAUNAS ETC.).

BOILER: made of top quality and very thick steel casing, featuring a carefully applied, double cryolite glass or galvanised finish, which ensures a higher resistance to scaling.

CASING: pre-painted sheet metal.

BURNER: Stainless steel burner electronically ignited by means of ionizing flame detection.

INSULATION: made of fibreglass rolls, which ensure an even insulation.

MODEL	BGE	BGE	BGE	BGE	BGE	BGE	BGE	BGE	BGE	BGE
LITERS	150	200	300	400	500	600	800	1000	1500	2000
A	1300	1500	1700	1760	1990	2090	2000	2220	2180	2500
B	1200	1400	1500	1560	1790	1890	1800	2020	1900	2300
C	540	540	700	750	750	800	990	990	1290	1290
D	480	480	600	650	650	700	900	900	1200	1200
E	360	360	375	380	380	390	460	460	340	340
F	600	725	845	850	920	990	950	1070	840	940
G	1230	1430	1235	1270	1520	1610	1440	1680	1400	1800
I	100	100	140	140	140	140	160	160	160	160
M	400	400	620	630	630	660	710	720	450	450
N	/	/	100	100	100	100	120	120	120	120
P	3/4"	3/4"	1" 1/4	1" 1/4	1" 1/4	1" 1/4	1" 1/4	1" 1/4	1" 1/4	1" 1/4
Q	COLD WATER INLET 1 - SHUTOFF VALVE 2 - PRESSURE REDUCER 3 - SAFETY VALVE 4 - EXPANSION TANK									
R	HOT WATER OUTLET									
S	DRAINAGE CONNECTION - 1/2" 5 - DRAIN VALVE									
T	RECIRCULATION CONNECTION									
WEIGHT (Kg)	55	64	107	117	135	158	252	285	350	420

MODEL	SERIE BGE										
	UM	150	200	300	400	500	600	800	1000	1500	2000
CAPACITY OF THE TANK	Litri	150	200	240	390	450	565	780	950	1450	1900
NOMINAL HEAT INPUT	kW	9,9	9,9	17,4	23,7	23,7	23,7	37,0	37,0	42,0	42,0
WORKING THERMAL POWER	kW	8,2	8,2	14,6	19,9	19,9	19,9	32,5	32,5	35,3	35,3
FUME EVACUATION DUCT Ø	mm	100	100	140	140	140	140	160	160	160	160
MAX WATER PRESSURE	bar	6	6	6	6	6	6	6	6	6	6
FUME TEMPERATURE	°C	176	176	125	120	115	115	123	123	123	123
RECOVERY TIME 45° C	min.	40	43	45	33	36	40	38	34	67	70
CONSTANT DRAWING AT 45° C	l/h	195	195	418	570	570	570	1035	1047	1047	1100
CONSTANT DRAWING AT 65° C	l/h	117	117	251	342	342	342	621	628	628	650
NATURAL GAS - 20 mbar PRESSURE											
CONSUMPTION	m3/h	1	1	1,8	2,5	2,50	2,5	3,90	3,90	4,44	4,44
BURNER NOZZLE Ø	mm	2,40	2,40	3,45	4,10	4,10	4,10	3,15x3	3,15x3	3,15x3	3,15x3
PRESSURE TO BURNER	mbar	15,5	15,5	13,3	11,6	11,6	11,6	11,7	11,7	13,5	13,5
MASS FUME CAPACITY	g/s	6,7	6,7	19,6	18,8	18,8	18,8	32,0	32,0	30,2	30,2
GPL G30/G31 - 30/37 mbar PRESSURE											
CONSUMPTION	Kg/h	0,75	0,75	1,30	1,80	1,80	1,80	2,90	2,90	3,30	3,30
BURNER NOZZLE Ø	mm	1,60	1,60	1,95	2,40	2,40	2,40	1,80x3	1,80x3	1,85x3	1,85x3
MASS FUME CAPACITY	g/s	12,3	12,0	21,5	19,0	19,0	19,0	30,6	30,6	28	28

Coterm



LA NUOVA COTERM s.r.l.

24068 SERIATE (Bg)

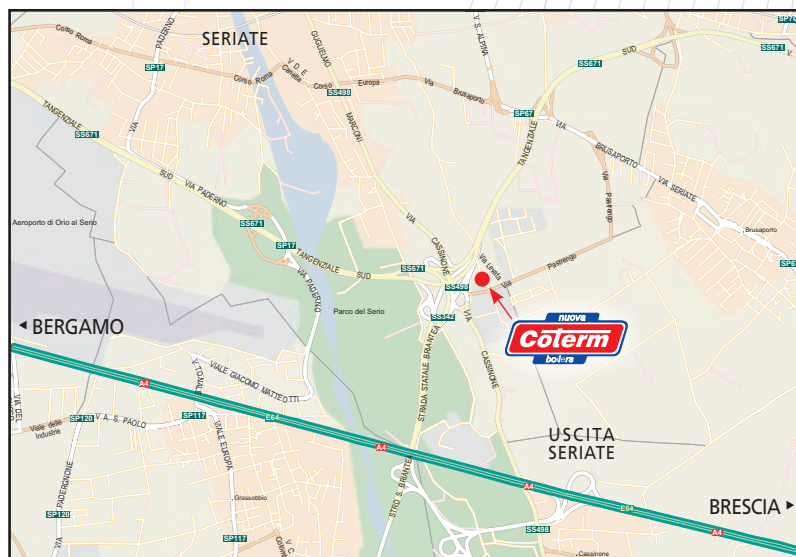
Via Levata, 10

Tel. 035.290.665

Fax 035.301.843

www.coterm.com

e-mail: info@coterm.com



Water Heaters

electric gas industrial